



ASHE

Southern New Jersey

August - December 2023 Recap

Upcoming Events

February 13, 2024
Mercer County Bridge 415.2
The Stone Terrace by John Henry's
2275 Kuser Rd,
Hamilton Township, NJ 08690

INSIDE THIS ISSUE:

Sponsor Spotlight- GPI <i>Connected Vehicle Vision for New Jersey Transportation Shore Corridor</i>	4
September 26, 2023 Meeting Highlight— <i>NJDOT & NJTA Capital Programs</i>	6
October 18, 2023 Meeting Highlight— <i>Emergency PennDOT I-95 Repairs</i>	7
November 2, 2023 Meeting Highlight— <i>Social</i>	8
November 29, 2023— <i>Emergency Repairs NJTA Interchange 7 Ramp</i>	9
Sponsor Spotlight- RVE <i>Atlantic City Expressway Connector Resurfacing Project</i>	10
Scholarship Flyer	12
POTY Flyer	13
Sponsorships	14
Upcoming Events	16

Message from the President Heather Sabetta, ASHE SNJ President 2022-2024

This year went fast. I can't believe it is already 2024. We have had some wonderful technical and social events this fall and they are summarized in this newsletter recap. We had a record breaking 211 people who registered for the September's NJDOT & NJTA Capital Programs event. Thank you to everyone who comes to our events. It makes us feel like we put on a good program. There is a great upcoming schedule as well, check out our <https://ashesnj.wildapricot.org/events> for upcoming events and don't forget to follow us on LinkedIn.

Right now, our meeting schedule is full for the 2023-2024 technical events, but we are starting to look toward the 2024-2025 year. If you have an interesting project or an idea for a field trip, please reach out to me and we can get you on the list for next year. In addition, we are always looking for volunteers to help! If you are interested in helping but not making a huge commitment, we have lots of opportunity as committee board members or subcommittee members. We would love for you to join our board.

Thank you to all the Dinner Sponsors this year! We have had so many more this year than in the past. Dinner Sponsors keep the event fees down. I would be remiss if I don't thank all the Annual sponsors as well. (Don't miss two of our annual sponsors articles in this newsletter.) As you probably have heard me say, ASHE is a non-profit organization, all the money this section raises goes toward student scholarships. Our section's goal is to give more each year than the last. So thank all of you for your continued support.

Thank you to all that completed our Student Outreach Poll. We asked a few questions, but the main question was "**How do we engage students more?**". The reoccurring comment was to hold events on campus at the various institutions including technical events, mixers, and open forums. We are working on incorporating in the upcoming years. The other results included invite them to monthly meetings for free, have them participate in real projects, partner with other student societies, set up more activities for student chapter, and start a club at colleges. We are happy to say that we do invite all our active student chapter members to our events for free and we are working on getting as many student chapters as possible in the state of New Jersey.

In fact, I would like to welcome on behalf of our section and North Central New Jersey Section, **the newest student chapter at The College of New Jersey**. This creates four active student chapters including Rowan, Mercer County Community College, Rutgers. As a note, these student chapters meet regularly and are greatly appreciative of any guest speakers we can provide at their meetings. This is also a great way for you to network with potential candidates for entry-level positions and internships. If you have a topic you would like to present to the students at one of these meetings, please let Godfrey Joyner at giovner@kmapc.net know so we can add you to the schedule! As for participating in real world projects and set up activities, we are working with North Central section to create a Student Competition. We are in the very early stages of idea development. We hope to have our first one ready for action next school year.

New Jersey ASHE Project of Year Application and the **Student Scholarship Applications** are now open. Be sure to submit before the deadline and forward to those you think will make great candidates.

2023-2024 OFFICERS

EXECUTIVE BOARD

President
Heather Sabetta, PE



heather@ace.engineer

Vice President
Chris Gentz, PE



cgentz@olivercomm.com

Secretary
Sara Irick, PE, CME,
PMP, TDM-CP



Sara.Irick@FPAengineers.com

Treasurer
Mike Danko



Mdanko@pennoni.com

Past President
Joseph Macios, PE



joemacios@hotmail.com

BOARD OF DIRECTORS

Education
Godfrey Joyner



gjoyner@kmapc.net

Public Relations
Karnvir Mashiana, PE



Karnvir.Mashiana@aeapc.com

Scholarship
Dylan Livingston



dalivingston@mccormick
taylor.com

Regional Director
Joseph Danyo, PE



JDanyo@mbakerintl.com

**We are always looking for feedback and recommendations,
feel free to reach out to the board.**

COMMITTEE BOARD MEMBERS

Membership
Chris Siwczak, P.E.



chris.siwczak@collierseng.com

Golf Outing
Stephen Forney



Joseph.Chichilitti@
bakerintl.com

Venues
Matt Galbraith, PE



MatthewGalbraith@hillintl.com

Social Events
Brent Brisko



brent.bitsko@gmail.com

PDH Coordinator
Chris Siwczak, P.E.



chris.siwczak@collierseng.com

Website
Sara Irick, PE, CME,
PMP, TDM-CP



Sara.Irick@FPAengineers.com

Sponsorship
Richard Grubb



RGrubb@rgain
corporated.com

Social Media
Karnvir Mashiana, PE



Karnvir.Mashiana@aeapc.com

Past President Committee
Amy Sokalski, PE, PTOE,



ASokalski@mccormicktaylor.com

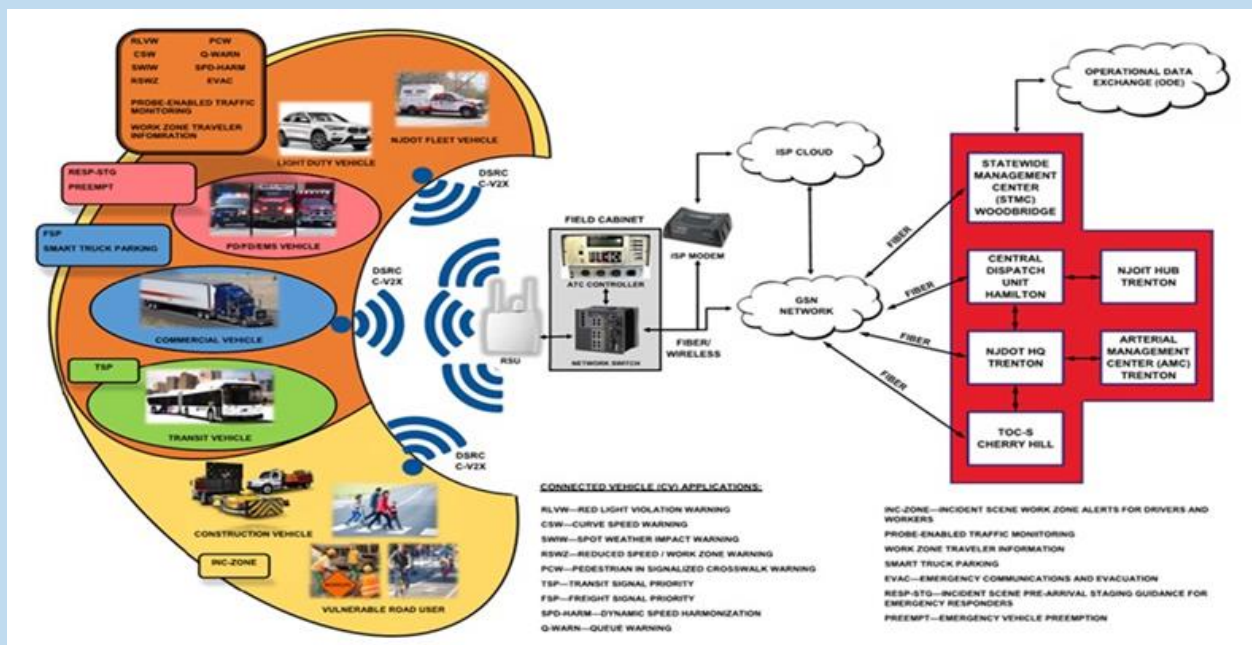
We are always looking for help!

Spotlight on Greenman-Pedersen, Inc. (GPI) : Connected Vehicle Vision for New Jersey Transportation

Written By: Tim Herlihy, PE

As one of the most congested states in the country, New Jersey had always endorsed innovation to ensure mobility and safety. In the early 1990's, the New Jersey Department of Transportation (NJDOT) began to implement Intelligent Transportation Systems (ITS) to more effectively manage and maximize the efficiency of its available infrastructure. These technologies include surveillance, detection and messaging in the form of dynamic messaging signs, radio, website, text alerts, coordinated signals, and Active Transportation and Demand Management (ATDM) systems to monitor weather and traffic conditions, provide real time information for decision making, and proactively and dynamically address congestion and incidents. NJDOT has continued with next generation technologies including adaptive traffic signal control systems and variable speed limit signs (VSLS).

The next step is Connected Vehicle Technology (CVT) providing a direct connection between vehicles (V2V) and vehicle-to-roadside unit communications (V2X) to more effectively operate, including coordination with transit services and other travelers (vehicles, bicyclists, pedestrians and others) . CVT has the potential to not only improve mobility and safety, but also to reduce emissions. See the figure below



NJDOT currently operates a Road Service Safety Message System inform connected vehicles of the presence of Safety Service Patrol (SSP) responding to an incident or assisting a motorist. Installation of connected vehicle technology has been completed along portions of three state highway corridors and is currently in final testing before active operation with the public that use vehicles equipped with the applicable equipment. NJDOT has also partnered with Middlesex County, the City of New Brunswick, and Rutgers University in the deployment of the New Brunswick Innovation Hub Smart Mobility Testing Ground (SMTG). The SMTG provides for testing various connected vehicle technologies in a controlled environment.

To ensure trust in communications among vehicles and with infrastructure, a Security Credential Management System (SCMS) is used to provide innovative methods of encryption and certificate management to protect the system and the privacy of vehicle owners.

To learn more about how NJDOT evaluated and prepared for connected vehicle technology, including coordination with others within the Region, see my full article on LinkedIn at <https://www.linkedin.com/pulse/connected-vehicle-vision-new-jersey-transportation-tim-herlihy-aesfc>.



September 26, 2023 Meeting Highlight

ASHE NCNJ and ASHE SNJ Joint Dinner Meeting

NJDOT & NJTA Capital Programs

Presentation by:

Parth Oza, P.E., Assistant Commissioner, Capital Program Management, NJDOT

Lamis T. Malak, P.E., Deputy Chief Engineer, New Jersey Turnpike Authority

The presentation focused on providing a comprehensive summary of the status and future outlook of the New Jersey Department of Transportation (NJDOT) and the New Jersey Turnpike Authority (NJTA) Capital Programs. It covered key developments, ongoing projects, and strategic initiatives. Additionally, it offered insights into future plans and investments, highlighting how they intended to improve transportation infrastructure in New Jersey.



THANK YOU TO OUR MEETING SPONSORS:

ADVANTAGE ENGINEERING ASSOCIATES, ARORA AND ASSOCIATES, P.C., HNTB, IH ENGINEERS, P.C., RICHARD GRUBB AND ASSOCIATES, INC., REMINGTON & BVERNICK ENGINEERS, URBANTECH CONSULTING ENGINEERING, P.C, AND VAN CLEEF ENGINEERING

October 18, 2023 Meeting Highlight

ASHE SNJ Technical Dinner Meeting

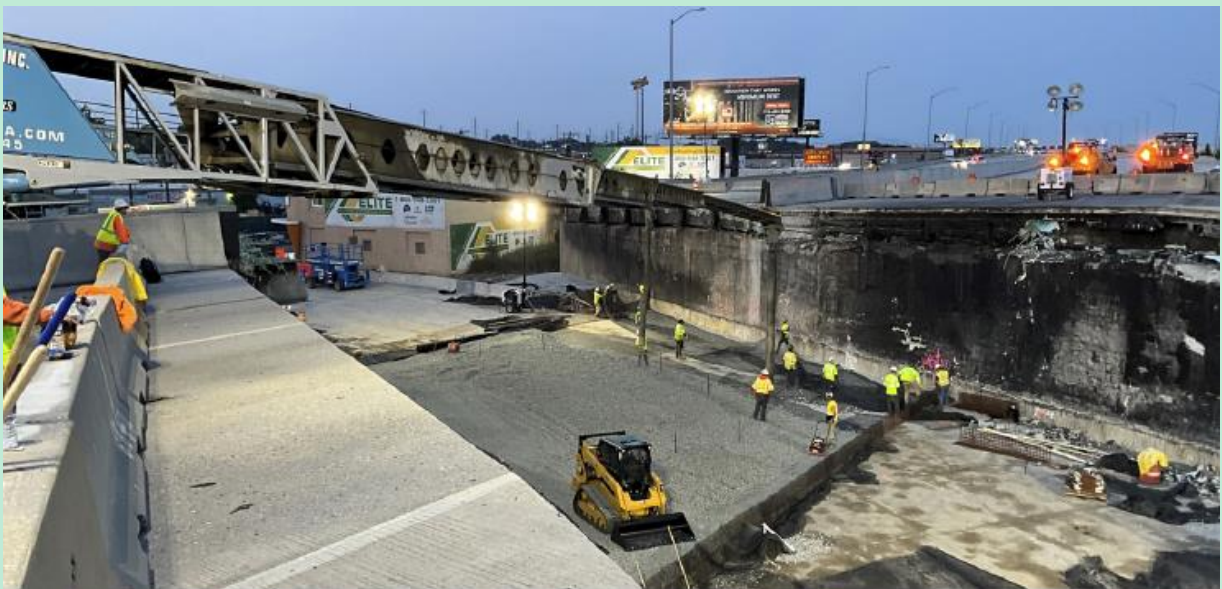
Creative Solutions to Reopening the I-95 Bridge in 12 Days

Presentation by:

Robert Buckley, Owner, Buckley & Company, Inc

Archie Filshill, Ph.D., ENV SP, Founder, Aero Aggregates of North America, LLC

The presentation covered PennDOT's emergency response to the collapse of a section of I-95, following a tanker truck accident on June 11. This incident, involving a truck carrying 8,500 gallons of gasoline from Wilmington, Delaware to Philadelphia, resulted in significant damage to the interstate. Impressively, the damaged portion of I-95 was reopened in just twelve days with six temporary lanes. The presentation featured insights from the contractor and the recycled glass foam aggregate company, focusing on the innovative methods and materials employed to expedite the repair and reopening of this crucial transportation route.



THANK YOU TO OUR MEETING SPONSORS:

AERO AGGREGATES NORTH AMERICA, MCCORMICK TAYLOR, MICHAEL BAKER INTERNATIONAL,
SCHNABEL ENGINEERING, STV, TRAFFIC PLANNING AND DESIGN, INC.

November 2, 2023 Meeting Highlight

ASHE SNJ Social Event

Riverhorse Brewery



November 29, 2023 Meeting Highlight

ASHE SNJ Technical Dinner Meeting

Emergency Repairs New Jersey Turnpike Interchange 7 Ramp Over Route 206 and TOY DRIVE

Presentation by:

Bryan Maddocks, PE - HNTB

Brian Atkinson, PE – HNTB

The project presentation detailed the response to an incident on March 10, 2022, where an over-height tractor trailer struck Turnpike Bridge No. 53.28B, damaging four of the eight girders and leading to the closure of Interchange 7 and Route 206 Southbound (SB). HNTB, alongside the New Jersey Turnpike Authority, ATANE, Ferreira Construction, and NJDOT, rapidly mobilized to inspect and design solutions. HNTB proposed a complete superstructure replacement for the damaged bridge span, with a focus on staged construction to minimize risk, reduce maintenance costs, and improve clearance.

To overcome supply chain challenges and expedite the repair, HNTB collaborated with various fabricators and suppliers to source readily available materials, including steel girders and elastomeric bearings. The Authority facilitated this process by waiving standard submission requirements and allowing a modified design review, speeding up the fabrication process. The collective efforts of HNTB, Ferreira, and ATANE resulted in the bridge's reopening on October 7, with the new span increasing vertical clearance and ensuring the bridge's longevity.



This year our holiday drive benefited **HomeFront NJ**. HomeFront's mission is to end homelessness in Central New Jersey by harnessing the caring, resources, and expertise of the community. They lessen the immediate pain of homelessness and help families become self-sufficient. They work to give their clients the skills and opportunities to ensure adequate incomes, and they work to increase the availability of adequate, affordable housing. They help homeless families advocate for themselves individually and collectively. Find out more on their website! <https://www.homefrontnj.org/>

THANK YOU TO OUR MEETING SPONSORS:

CATALYST GROUP, DAVEY RESOURCE GROUP, GTS CONSULTANTS, AND HNTB

Spotlight on Remington & Vernick Engineers (RVE) :

Atlantic City Expressway Connector Resurfacing Project Provides Significant Improvement to Southern New Jersey Infrastructure

Remington & Vernick Engineers (RVE) provided engineering design and construction management services to the South Jersey Transportation Authority (SJTA) for the Atlantic City Expressway Connector Resurfacing. RVE also provided the initial budget cost for the project to the SJTA under their general engineering consultant contract. The Connector is a series of mainline roadways (including portions of State Rt 30, 87 and 187), ramps, bridges, tunnel and local roadways. Its purpose was to connect the Atlantic City Expressway with Brigantine City and planned casino development in the Marina District of Atlantic City. Originally completed in 2000, the Connector had not been resurfaced in any manner since its inception. It encompasses approximately 15 miles and 40 lane miles and includes one of the two tunnels present in New Jersey. The Connector has very few tangent sections of roadway and numerous on-off ramps confined to a small section of land in the Uptown, Midtown and Marina Districts of Atlantic City. It has traffic signalized intersections and an at-grade railroad crossing.



The Atlantic City Expressway Connector was designed to connect the Atlantic City Expressway with Brigantine City and planned casino development in the Marina District of Atlantic City.

A toll increase by the SJTA in 2020 paved the way (pun intended) for a long overdue resurfacing of the entire Connector. SJTA established a construction budget of \$6.3 million and the project was scheduled to be completed between September and May with an anticipated winter shutdown. All work was to be performed at night to limit traffic disruption. Keeping on schedule was essential to avoid construction during the high-volume travel season between Memorial Day and Labor Day. RVE prepared the construction documents and assisted with the

bidding process. The successful bidder was South State, Inc. at \$5.1 million, which was below the RVE's final engineer's estimate and the project's construction budget.

Complicating the project were two large utility projects by South Jersey Gas (Brigantine Redundancy) and Atlantic City Electric (Harbor Beach Redundancy). Both utilities were upgrading their facilities within the Connector area to provide redundancy to Atlantic City and Brigantine City. Unfortunately, they were not able to complete their utility upgrades within the project area before the resurfacing began, requiring adaptation and coordination by RVE and South State, Inc. to ensure resurfacing was performed before utility work was completed within the pavement areas. Some other project obstacles that had to be overcome included significant asphalt and fuel price escalations; a water main break with pavement; paving within the tunnel confined to a 14-foot clearance and leveling course to address a poor transition across the adjacent railroad crossing, requiring close coordination with NJ Transit.



Aerial view of the newly resurfaced Atlantic City Expressway Connector.

Before Memorial Day, the Connector was completely resurfaced with striping and raised pavement markers (RPMs) installed and the pavement had an overall positive IRI rideability bonus. The project ultimately came in about 15% under the initial budget estimate and was completed within the strict schedule. The Atlantic City Expressway Resurfacing provided a significant improvement to a key part of the infrastructure in the Southern New Jersey region.

SCHOLARSHIPS ARE AVAILABLE

APPLICATION DEADLINE: March 15, 2024.

The Southern New Jersey Section of the American Society of Highway Engineers has established a Southern New Jersey Scholarship for individuals currently enrolled in a Community College /2 Year Degree Program and **traditional 4/5 year degree program**. Pertinent information and guidelines for eligibility are as follows:

1. The amount and number of scholarships will be partly based on the number of qualified applicants. The individual scholarship amounts will be at least \$500 and a maximum of \$5,000.
2. The Scholarship Committee will make this award by May 2024.
3. Eligible applicants must be enrolled in a **civil engineering related degree** program (for the 2023-2024 school year).
4. The student must reside (or attend a Community College) in one of the following ten (10) counties in New Jersey: Atlantic, Burlington, Cumberland, Camden, Cape May, Gloucester, Mercer, Monmouth, Ocean, or Salem.
5. Eligible students must be maintaining at least a 2.5 grade point average.
6. Need, as well as scholastics, will be considered for this award.
7. The scholarship will only be awarded to an individual one time; however, students who are not awarded the scholarship may re-apply each year they are eligible.
8. Only one scholarship from ASHE New Jersey (either Southern New Jersey or North/Central New Jersey) will be given per recipient.

Please see the link below for the full application:

<https://ashesnj.wildapricot.org/scholarships>

Please submit your application and reference by March 15, 2024 to:

ASHE Scholarship Committee Chair

Mr. Dylan Livingston

c/o McCormick Taylor

700 East Gate Dr, Suite 201, Mt. Laurel, NJ 08054

Phone: (856) 206-5328

Email: dalivingston@mccormicktaylor.com

2024 PROJECT OF THE YEAR APPLICATION

The North Central and Southern New Jersey Sections of the American Society of Highway Engineers (ASHE) invite you to participate in its 2024 Award Program to honor consulting engineering firms, contractors, and transportation officials in their efforts to provide quality roadway facilities in New Jersey.

APPLICATION DEADLINE: March 15, 2024

TWO AWARD CATEGORIES!!! UNDER \$20 Million & OVER \$20 Million

This year there will be two (2) Project of the Year Awards. There will be one (1) for projects up to \$20M in total construction cost, and another one (1) for projects over \$20M in total construction cost. The selections will be based on the highest composite score of the following ranking criteria:

25% Complexity

25% New Application of Existing Technologies/Originality/Innovation

15% Social/Economic Considerations

15% Safety

10% Aesthetics and Sustainable Features

10% Meeting and Exceeding Owner's/Client's Needs

The winner will be determined based on the highest average score from all judges in each award category. In the event of a numerical tie, the projects with the tie score will be voted on by the judges in a "run-off" style election with each judge casting one vote for the winning project. The project that receives the highest vote total will be the winner.

To be eligible, the project must be a roadway-related construction project located within the State of New Jersey, where construction must have been substantially completed and open to the public in 2022 or 2023 (eligible as long as projected completion is by the end 2023). Non-winning prior year entries may be resubmitted.

Instructions and the application are available here: <https://ashesnj.wildapricot.org/POTY>

Please call Stella Karcnik at (609) 512-3475 (leave a message or email at Stella.Karcnik@wsp.com), should you have any questions regarding entry materials.

Awards will be presented during an ASHE Southern New Jersey and North Central New Jersey joint ceremony to be held on

THANK YOU TO OUR CURRENT SPONSORS



Dewberry®



GPI



Michael Baker

CONSULTING ENGINEERS, INC. INTERNATIONAL



REMINGTON & VERNICK ENGINEERS



Stantec



TRAFFIC PLANNING AND DESIGN, INC.



ASHE SNJ has many ways to sponsors:

Annual Sponsor- \$900

- Web-posting of Classified ads on www.southernnj.ashe.pro
- Company Logo & Featured Sponsor on main page of www.southernnj.ashe.pro and on Sponsorships page
- Opportunity to display a project photograph with recognition of sponsor firm on www.southernnj.ashe.pro
- Full page feature article on your firm (topic of your choice) in the ASHE-SNJ Newsletter (article provided by the sponsor firm)
- Special Recognition at ASHE SNJ Regular and Special Events on presentation screen
- \$100 discount on Monthly Dinner Sponsorships

Monthly Dinner Sponsor- \$250

- 5 minute presentation to all attendees to promote your firm or product
- Recognition display on slideshow and each dinner table
- Opportunity to display and distribute materials/pamphlets about your firm or product before, during, and after the meeting
- A seat at the head table with guest speakers for the evening (Includes cost of one registration and dinner)
- Company Logo in announcement and reminder emails
- ASHE SNJ Membership (Include member name in the comment section below)

Unlimited Job Posts for Non- Sponsors- \$250

- Unlimited job posts are included as a benefit for all Annual Sponsors
- Non-sponsors can purchase 4 months of unlimited posting of Classified ads on southernnj.ashe.pro/jobs
- All posts will be removed 4 months from date of purchase
- Contact the Sponsorship Chair for more information and to submit job posts

UPCOMING EVENTS

LOOKING AHEAD

Keep an eye on LinkedIn
and the [website](#) for more information:

February 13, 2024

Mercer County Bridge 415.2

The Stone Terrace by John Henry's
2275 Kuser Rd, Hamilton Township, NJ 08690

March 20, 2024

Atlantic City Expressway 3rd Lane Widening

The Bradford Estate
1910 Marne Hwy, Hainesport, NJ 08036

April 11, 2024

Project of the Year Awards

Forsgate Country Club
375 Forsgate Dr, Monroe Township, NJ